



Mobile and Pop-Up Services

A survey of North American Libraries



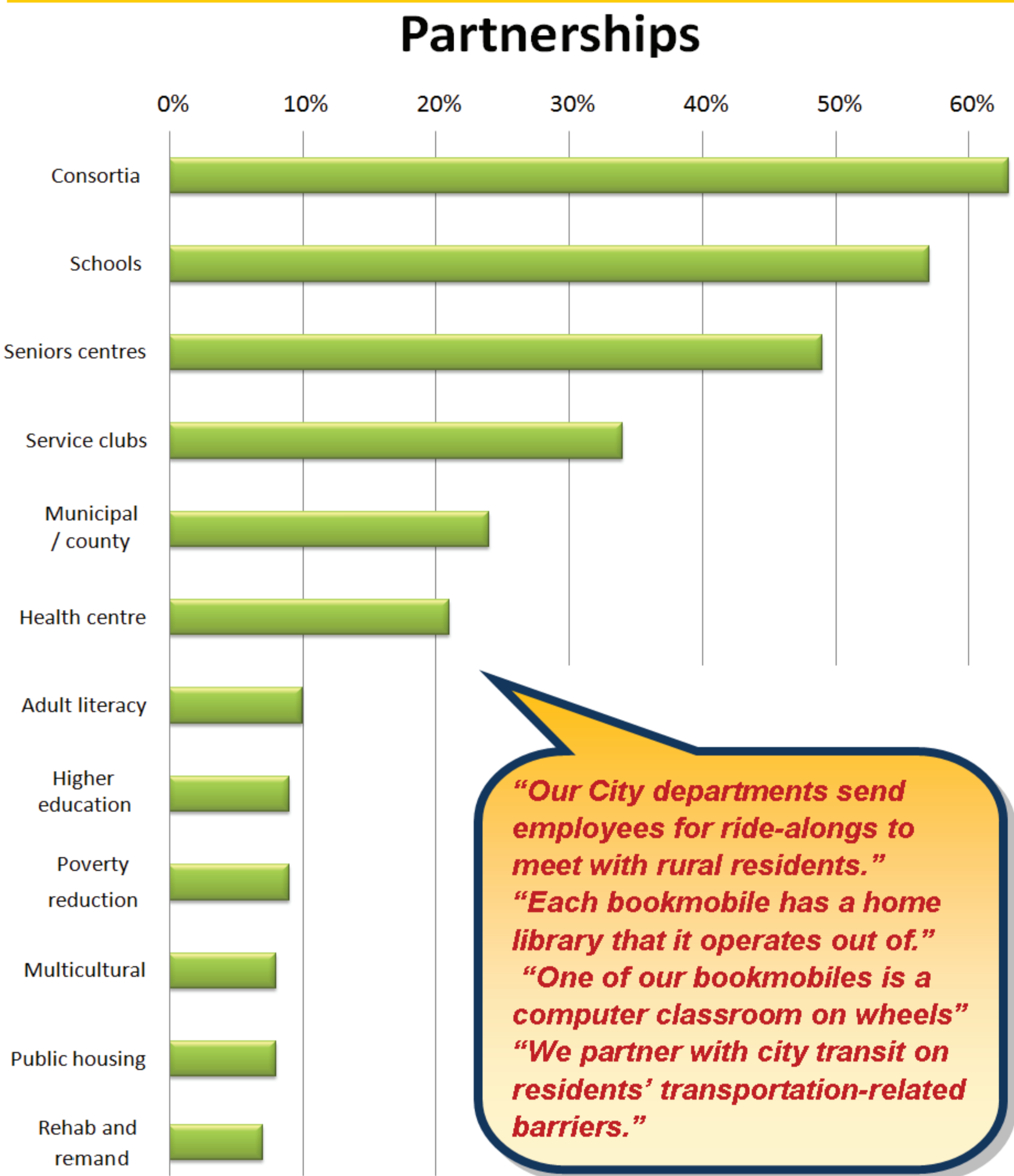
Trends

1. Services expected to increase
2. Outreach and programming are key
3. Kiosks and express library growing
4. Serving those experiencing barriers
5. Smaller themed vehicles
6. Support for electronic content

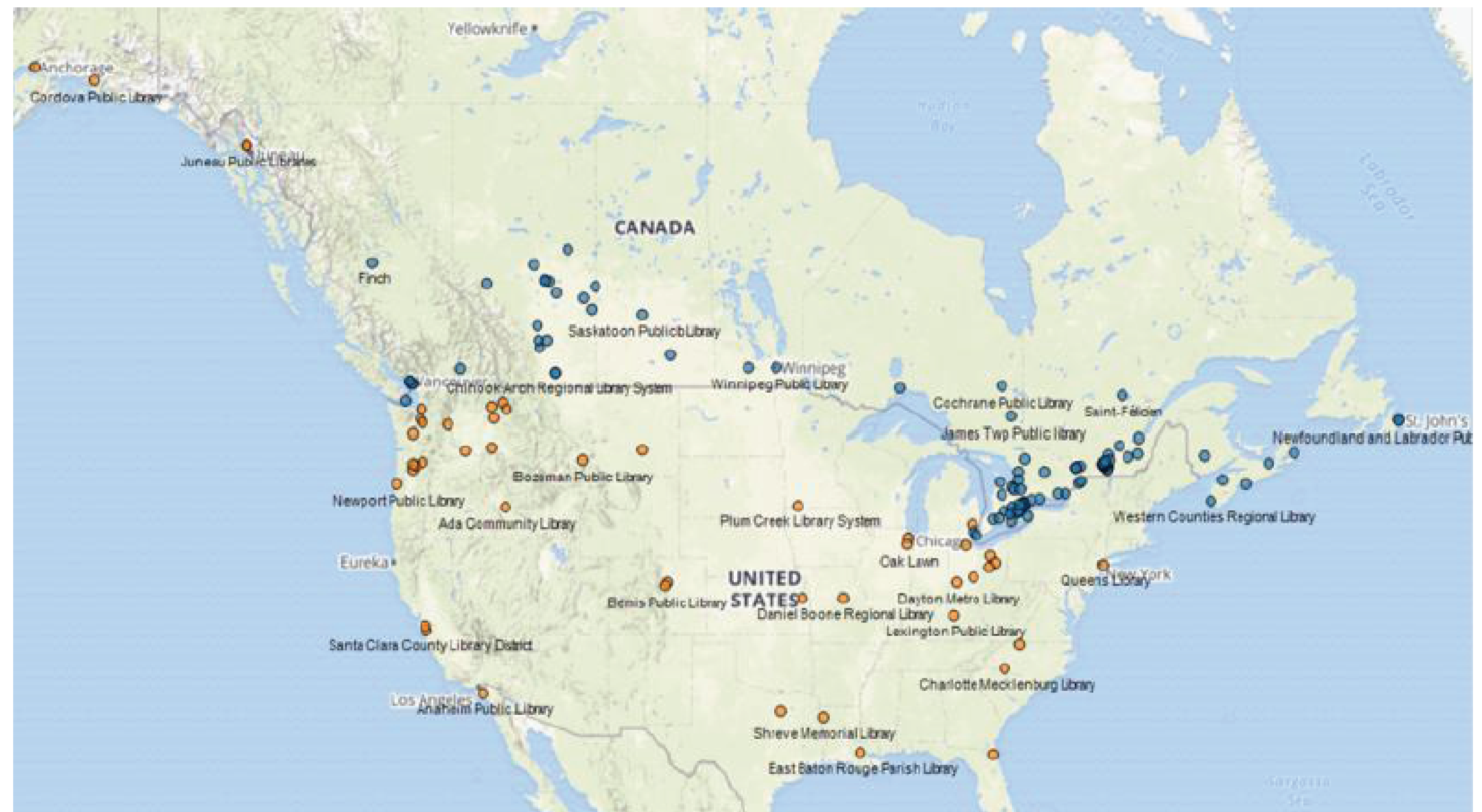


Innovations

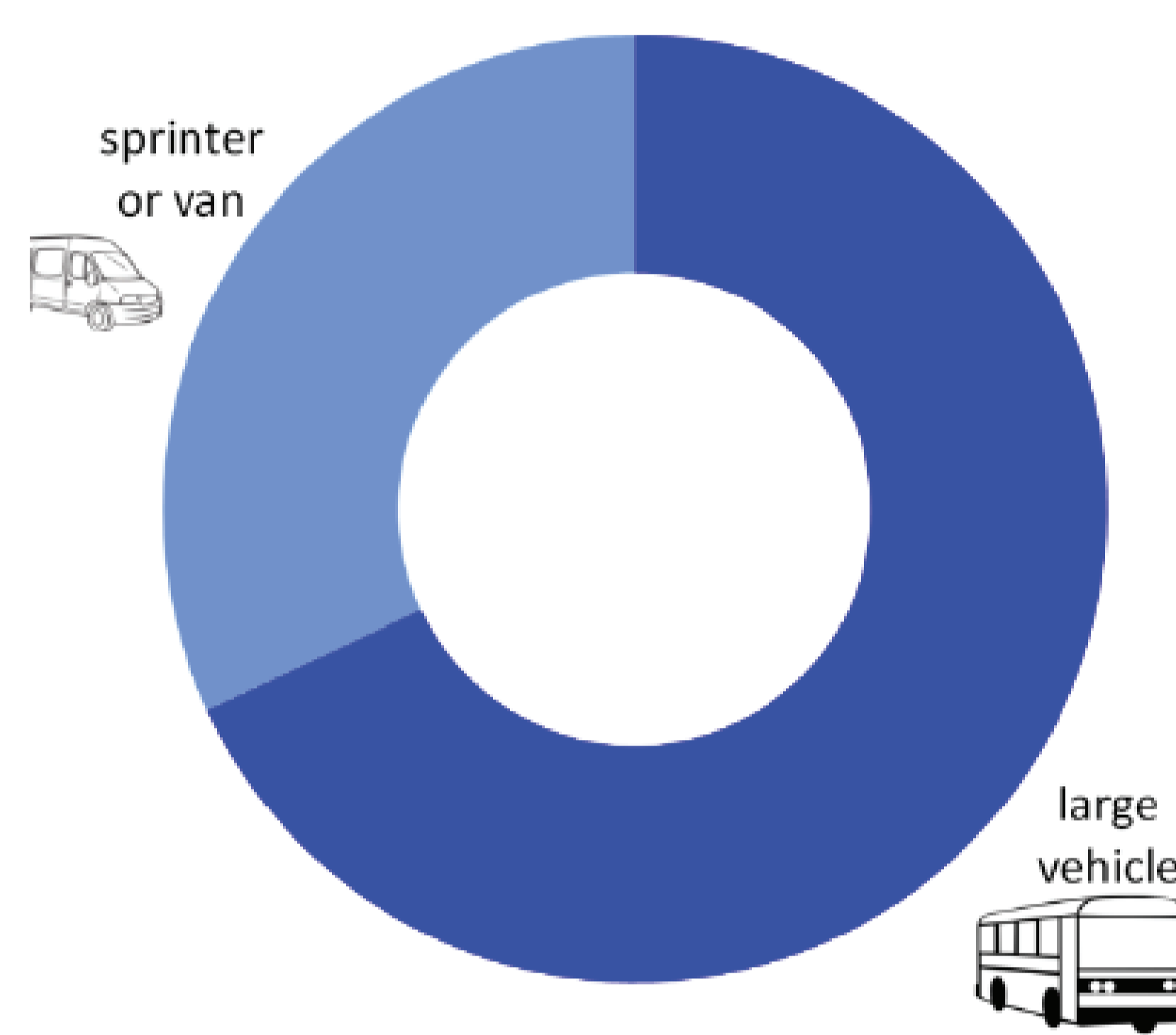
1. Returns bins in remote areas
2. Digital van, mobile maker space
3. Serving citizens in transition (shelters, food banks, refugees)
4. Sensory storytimes and gardens



	Canada	USA	Total	%Total
Libraries	94	46	140	
Bookmobiles	18	25	43	31%
Home delivery	58	27	85	61%
Interlibrary loan	39	19	58	41%
Kiosks / lockers	12	7	19	14%
Books by mail	10	12	22	16%
Special collections	29	3	32	23%
Depots	26	14	40	29%
Pop-Ups	18	7	25	18%



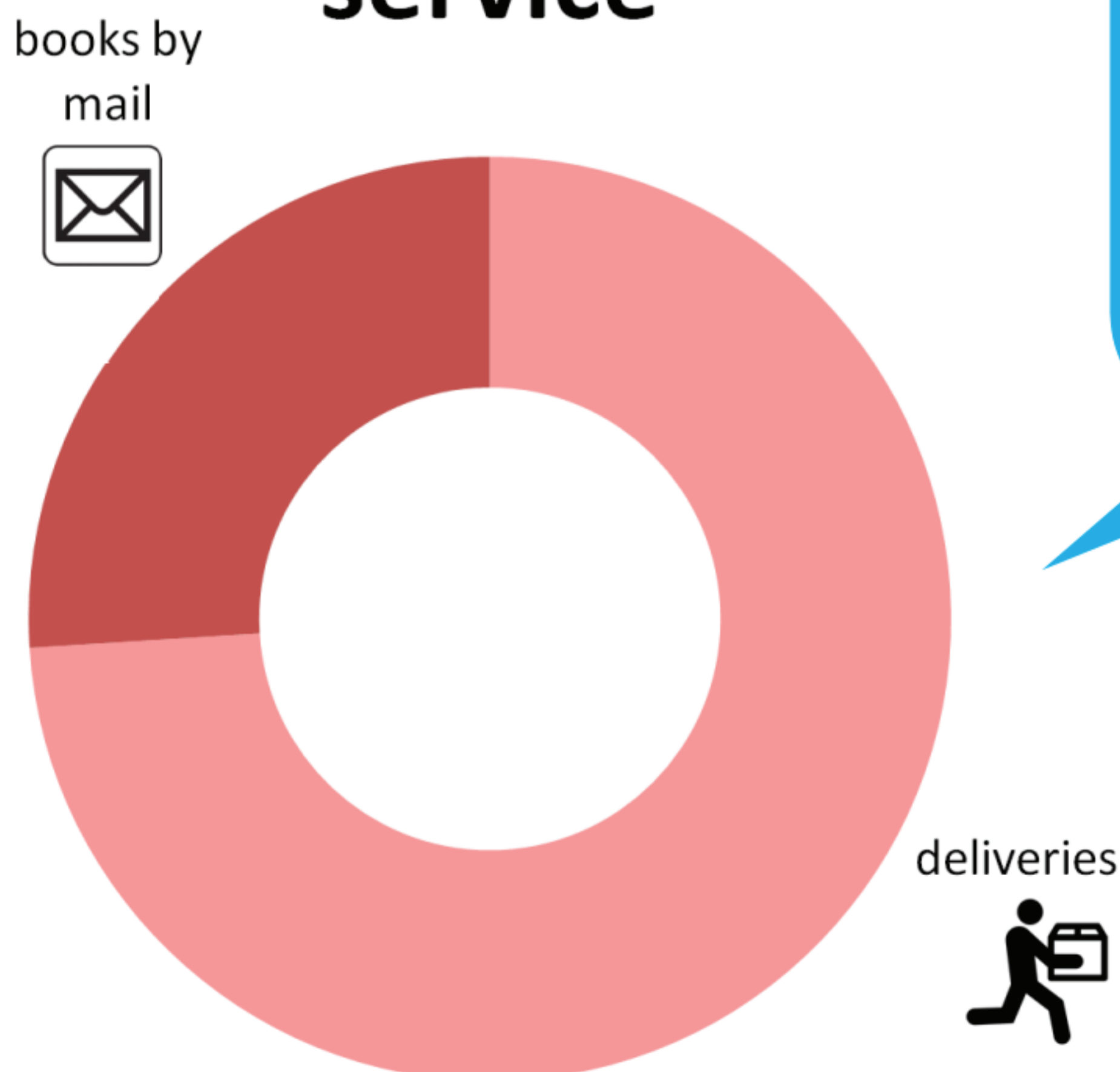
Type of bookmobile



"In 10 years, all accessible content will be digital."
"Increased decentralisation of home delivery service"
"There is demand for evening/weekend stops"
"We are careful how we promote service so we can meet demands based on existing resources"

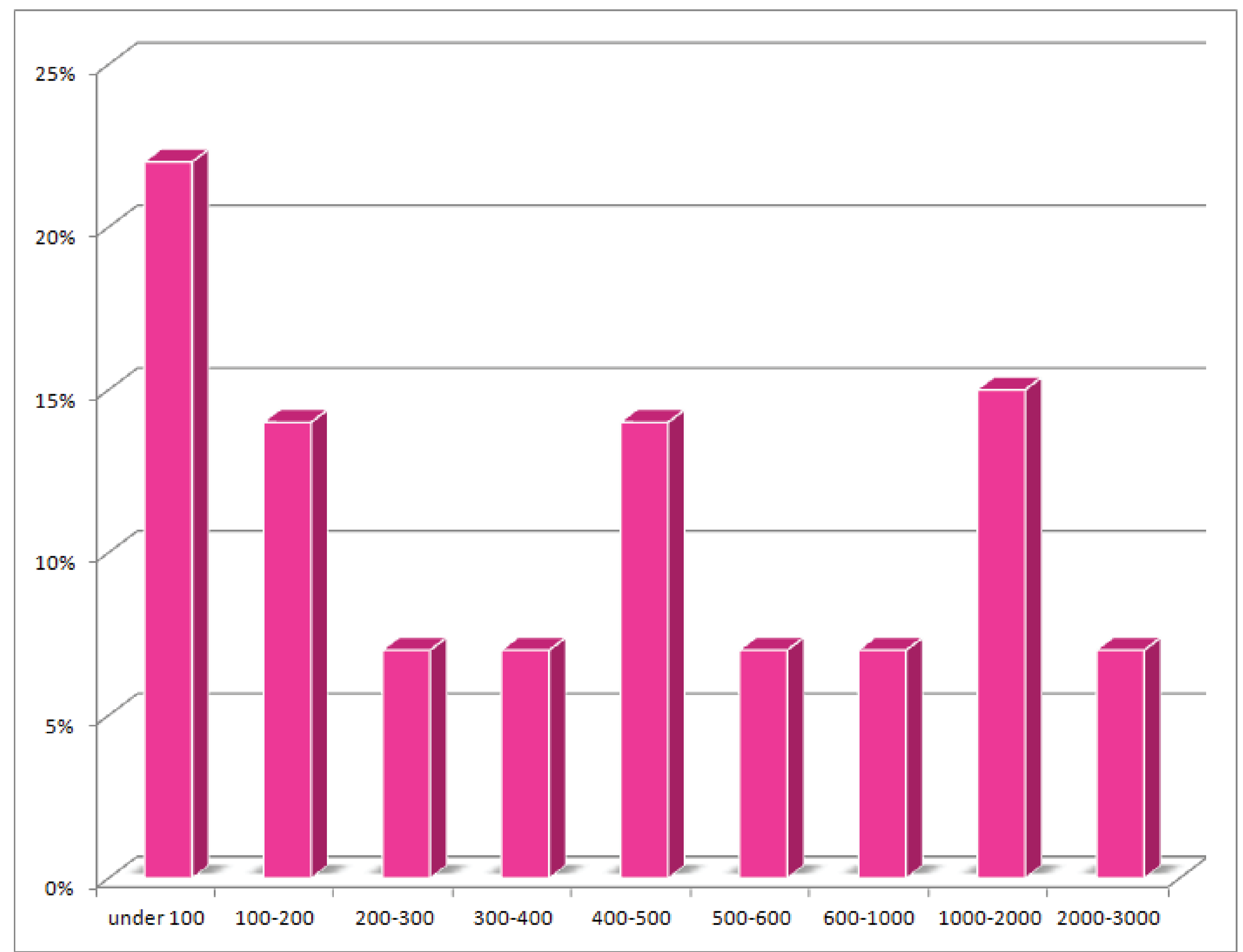
Large bookmobiles	Area (km ²)	Pop.	Co.
East Bonner County Library	4,973	40,699	US
Ottawa Public Library	2,790	883,391	CA
Anaheim Public Library *	2,587	3,459,012	US
Rochester Hills Public Library *	2,434	1,304,952	US
Shreve Memorial Library	2,427	254,887	US
Rockingham County Public Library	2,056	299,134	US
Fort Vancouver Regional Library *	1,828	611,222	US
Massillon Public Library *	1,554	407,615	US
Dayton Metro Library *	1,348	679,201	US
Strathcona County *	1,252	157,223	CA
East Baton Rouge Parish Library	1,217	445,227	US
Hamilton Public Library	1,117	519,949	CA
Holmes County District Public Library	1,098	43,593	US
Medina County	1,096	174,915	US
Toronto Public Library	630	2,615,060	CA
Toledo Lucas County Public Library	218	282,313	US
Windsor Public library	146	210,891	CA
Lethbridge Public Library	122	83,517	CA
Greater Victoria Public Library	19	80,017	CA

Type of homebound service



"We're considering ...
- outreach to people with mental disabilities & abused women"
- low-income residences"
- lending pre-loaded tablets"
- technology demos in homes."
"We partner with ...
- an agency for ASL storytime"
- meals on wheels"
- the elder college"
- caregivers groups."

Home delivery customers



Types of kiosks

