

A new reference desk?! A symbol of our commitment to service!



Reference & Research Desk

Medium
 In Person
 Telephone
 Email
 Chat & Other

Directional

Technical

Catalogue

Reference

Instruction

Time

Course Code

SOC209

Reference Question Type

R

CAT I

DB

E

PR

C

Q

Other

Notes

Student asking about peer reviewed, scholarly journal articles on "why youth join gangs". Showed how to use Sociological Abstracts Database and showed how to search using keywords, truncate, Boolean operators and narrow down by publication date and file search, explained peer review process and Ulrichs.

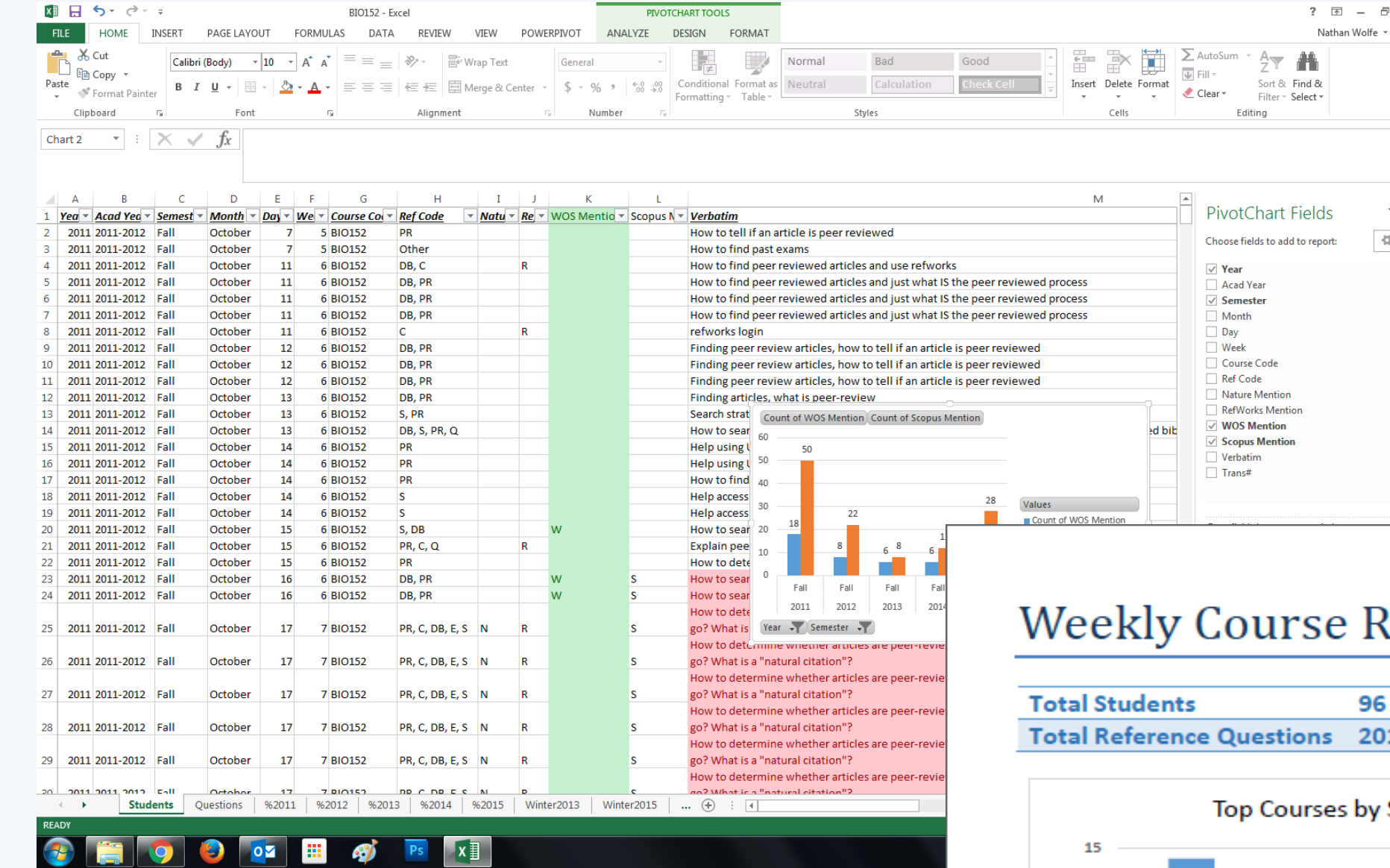
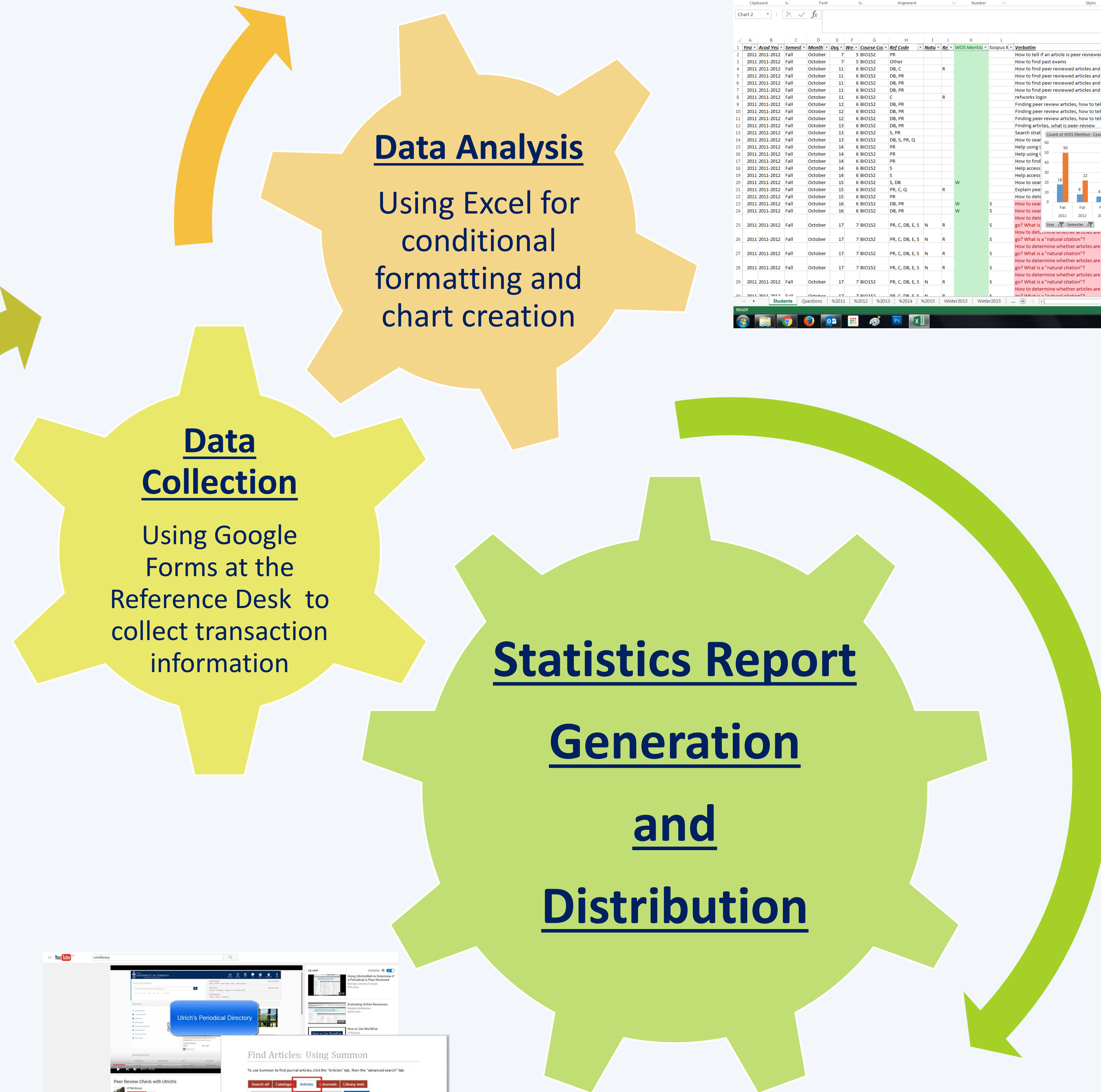
Submit

Save a word passwords through Google Forms

Powered by Google Forms

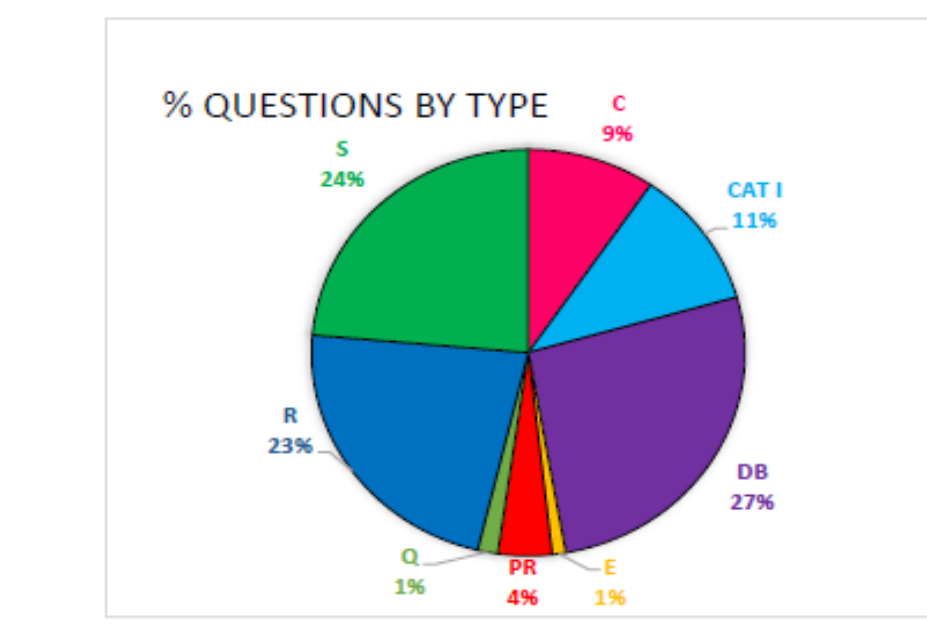
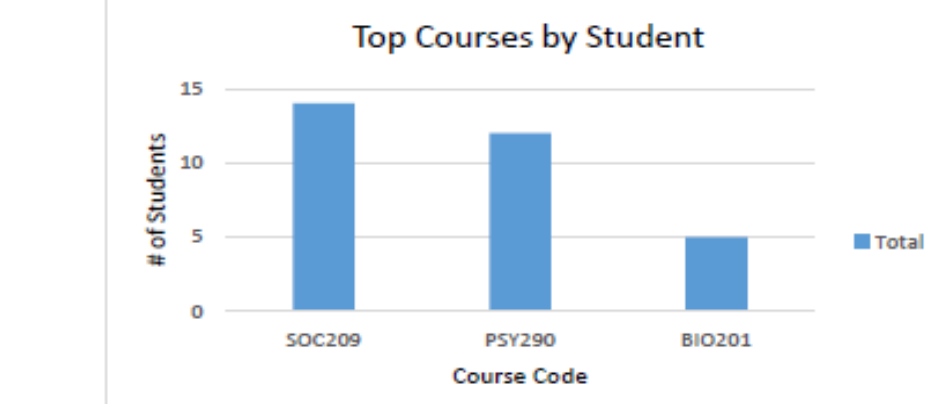
This content is neither created nor endorsed by Google

Report Abuse Terms of Service Additional Info



Weekly Course Report: 16 Jan.-22 Jan. (Winter 2017)

Total Students 96
 Total Reference Questions 201



- Over forty unique course codes were applied this week, with SOC209, PSY290 and BIO201 having at least five mentions. Students from SOC209 came in for research help for their annotated bibliography and needed ASA help. Students from PSY290 needed help tracking down the original scholarly source from a popular article.
- Overall, this was a heavy week for research related questions, with several assignments due that required extensive instruction in database usage.

Code Definitions

- S = Help with general search skills; research basics
- R = Subject specific research help; related to researching the specific topic
- CAT I = Catalogue instruction; complex catalogue searches
- DB = Database searching/instruction
- C = Citation questions
- PR = Peer review related questions
- E = Evaluating resources; is scholarly or not, primary v. secondary
- Q = How to carry out a type of assignment or piece of writing, e.g. how to do an annotated bibliography

Liaison Librarians Used for:

- Teaching self- assessment
- Faculty consultations
- Curriculum mapping
- LibGuides, tutorial videos

Reference Specialists Used for:

- Reference self-assessment
- Training student workers
- Print guides, tutorial videos

