

NEED CASH?

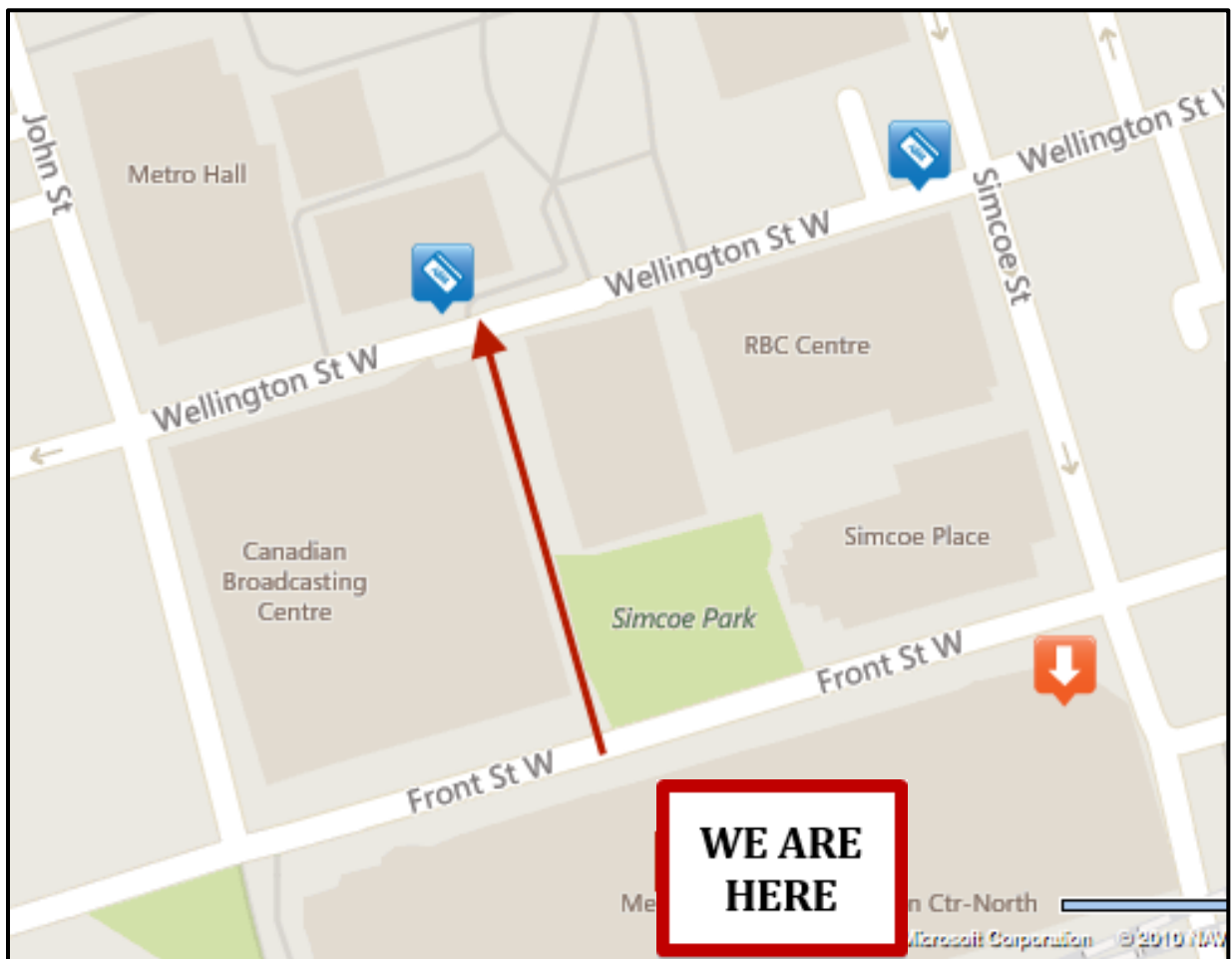
Closest Branch & Debit Machines

BMO  Bank of Montreal

Branch: KING & UNIVERSITY [200 KING ST W, TORONTO, ON, M5H3T4](#)

*Not on the Map (take pathway through the park to Wellington St)

Machine: [200 WELLINGTON STREET WEST, 200 TORONTO, ON, M5V3C7](#) (In Pharma Plus)



NEED CASH?

Closest branch & debit machines



Branch with ATM

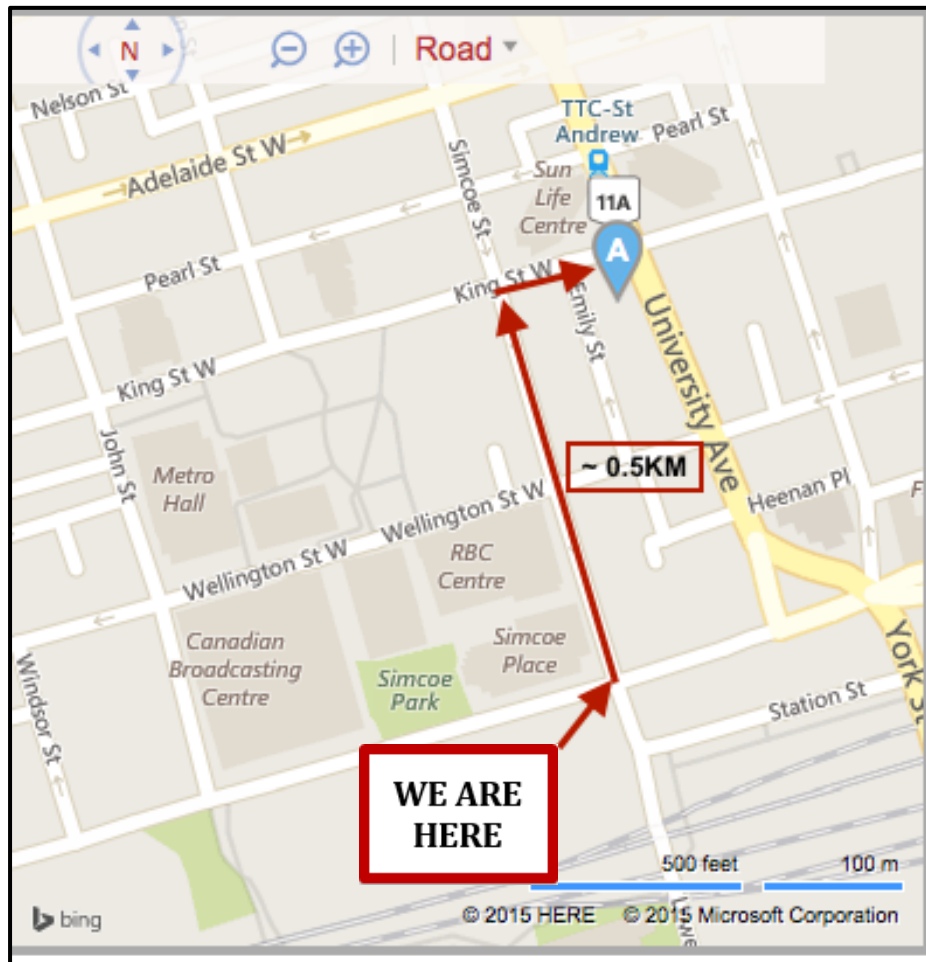
University And King, [100 University Avenue, Toronto, ON M5J1V6](https://www.cibc.com/branches/university-and-king)

Wednesday 8:00 AM - 5:00 PM

Thursday 8:00 AM - 6:00 PM

Friday 8:00 AM - 6:00 PM

Saturday Closed



NEED CASH?

Closest branch & debit machines



RBC ATM: [315 Front St. W.](#)

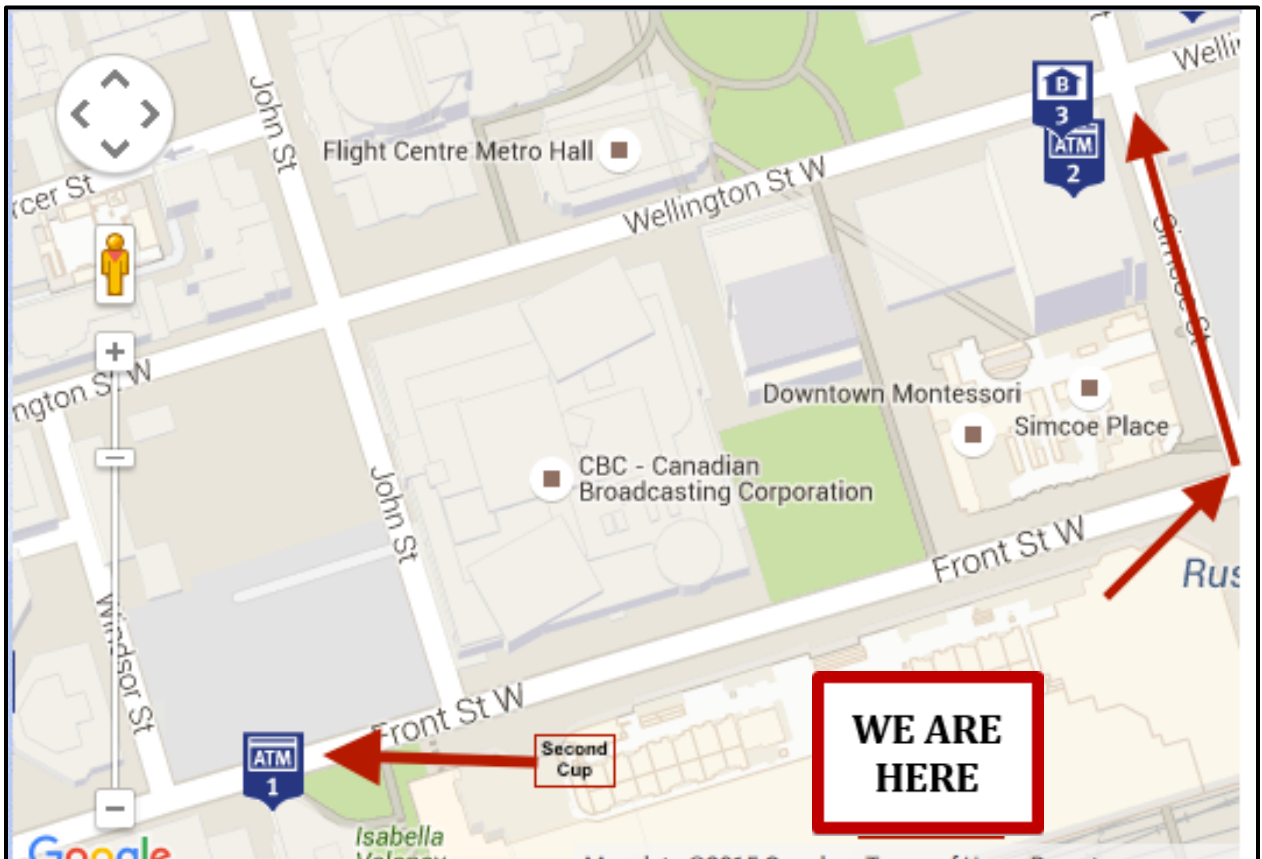
Branch: **Wellington & Simcoe**, [155 Wellington St W, Toronto, ON, M5V 3K7](#)

Wed: 8:00 - 6:00

Thu: 8:00 - 6:00

Fri: 8:00 - 6:00

Sat: closed



NEED CASH?

Closest branch & debit machines



Branch & Machine: King & University (Aetna Centre)

[145 King Street West, Toronto, ON, M5H 1J8](#)

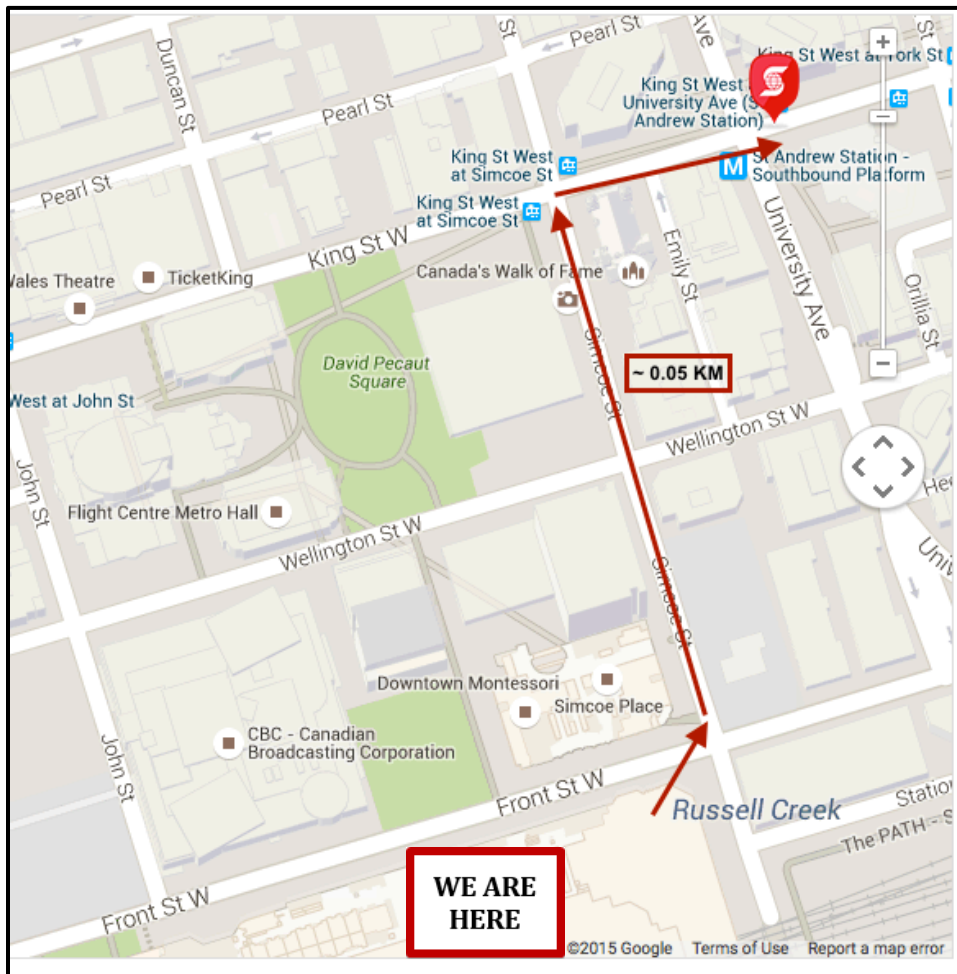
Hours:

Wed. 9:00 AM - 4:00 PM

Thu. 9:00 AM - 4:00 PM

Fri. 9:00 AM - 5:00 PM

Sat. Closed



NEED CASH?

Closest branch & debit machines



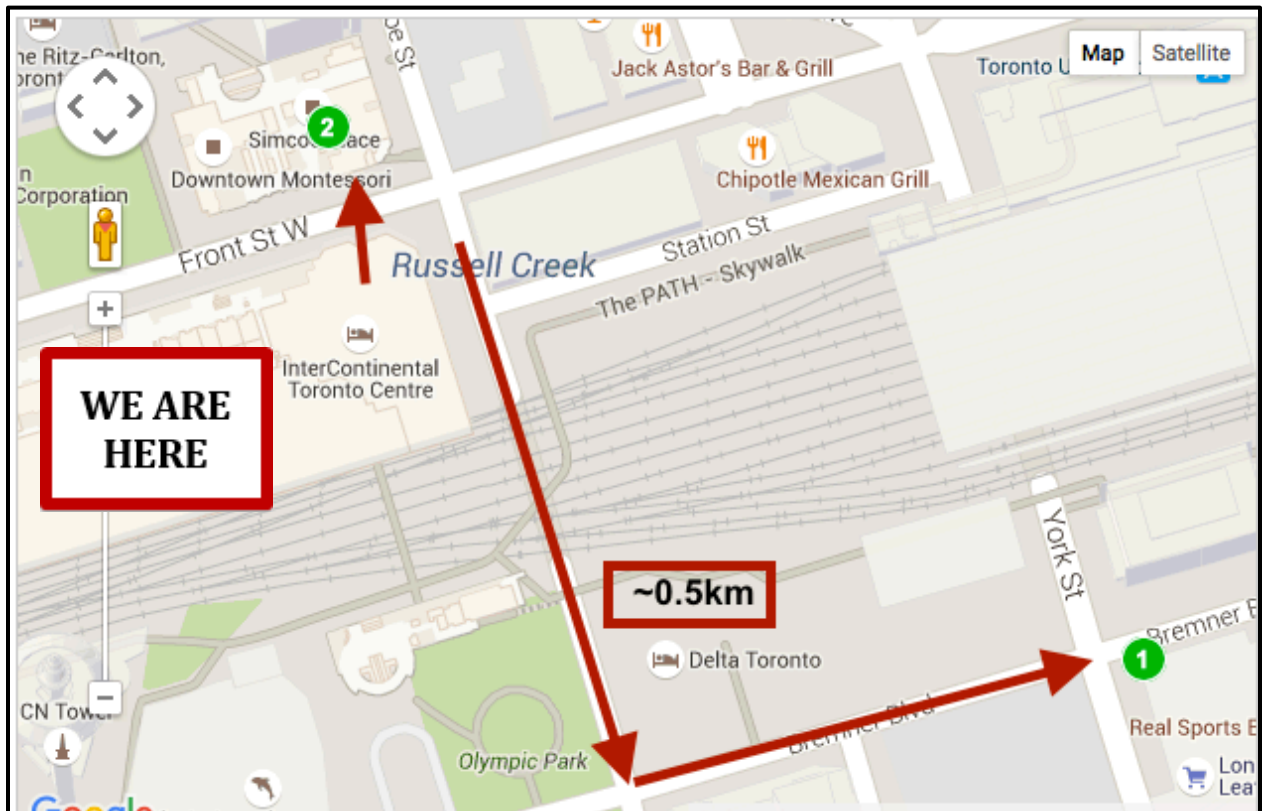
1. Branch: [15 York St](#) (York & Brenner in Maple Leaf Square)

- Wednesday 8:00 AM - 6:00 PM
- Thursday 8:00 AM - 8:00 PM
- Friday 8:00 AM - 8:00 PM
- Saturday 8:00 AM - 4:00 PM

*Take skywalk to Delta Hotel to minimize outside time

2. Green Machine Only: [200 Front St. W.](#) (Corner of Front and Simcoe)

*Head out ICTC Hotel front door and it is right across the street on the corner

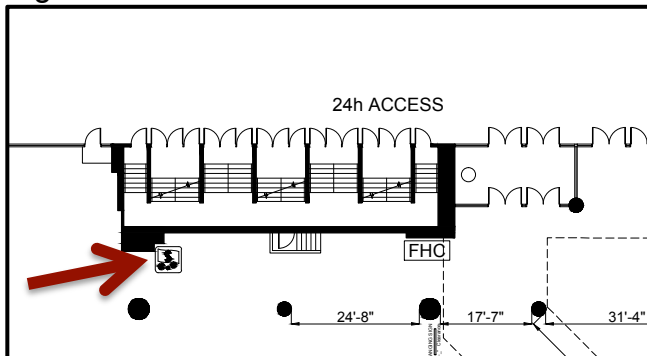


NEED CASH?

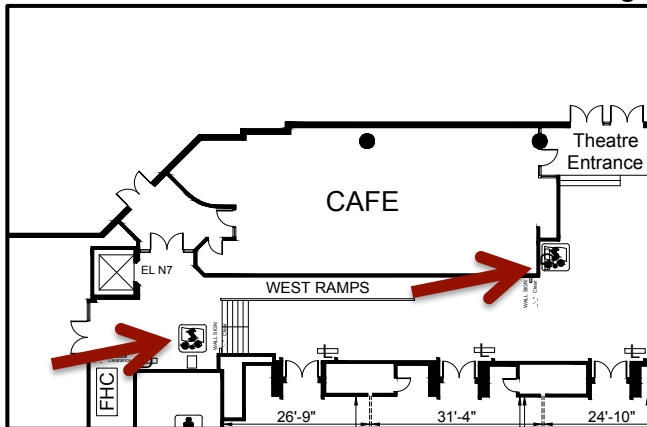
Closest branch & debit machines



Right inside the entrance to the central doors that face Front Street:



Near the Café at the west end of the building:



Before the entrance to the hotel:

